

CAT 2008 ANALYSIS

CAT has always lived up to its expectation of springing a surprise every year in one aspect or the other. The surprise element this year was added emphasis on Verbal as a result of which the weight-age of verbal section was nearly 45%. However, for the ones with sound vocabulary and good grammatical range & accuracy would have fared well as reading comprehension was back to normal 5 questions per passage from 3 questions last year. Over all, CAT 2008 was characterized by a 20% increase in the total number of questions affected by a whopping 40% increase in questions from verbal section. Hence, it had an easier to moderate Quant section, a lengthier but manageable verbal section and a tough DI.

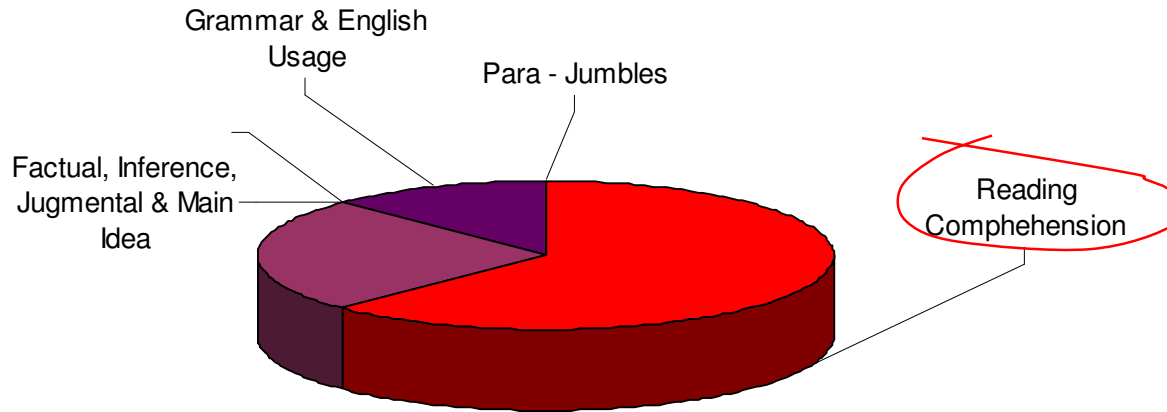
CAT 2008 Quant and DI were similar to CAT 2007 with minimum surprises. Still, a few pleasant surprises were the questions on the pattern of past CATs. Most of the questions were answerable using options, substitution method and other unconventional techniques. The test makers have deliberately put many question styles and formats that had appeared in CAT 2004, 2005 & 2006.

TCY experts predict a cut-off of around 128 for GD / PI calls from at least IIMs.

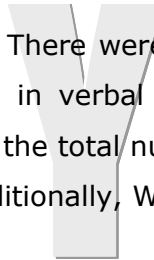
Verbal Section



CAT 2008 Verbal - Topic wise share



CAT 2008 verbal was relatively easy, though lengthy. There were no FIJ questions to bother the test takers this year. Also there were virtually no surprises except an increase in verbal questions. The format of questions was known. Reading comprehension topped the list with maximum share in the total number of questions. Also, CAT 2008 witnessed approx. 30% lower words per question figure than the last year. Additionally, Word usage and EU were real time savers in the lot.



TCY Experts predict a cut off of 40 for one IIM call and 45 for all.

RECOMMENDED ORDER OF ATTEMPT IN CAT VERBAL

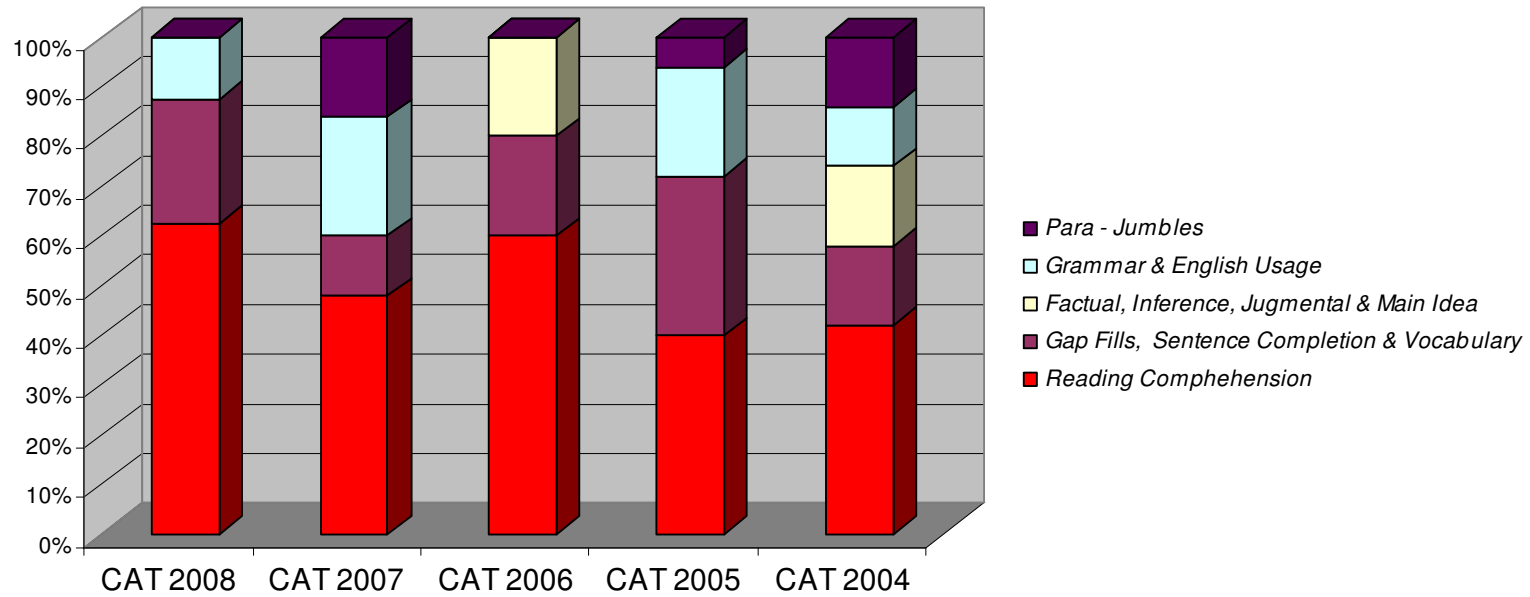
The highly recommended questions to be answered initially (in the round 1) were:

- 4 questions based on 'Word usage'
- Another set of 16 questions on English Usage was of moderate difficulty level.
- RC, as TCY experts always recommend, should have been touched after 30 min as by that time a test taker gets well in the rhythm of the test.
- Additionally, theme based questions would also have been a good choice.

Moreover, those with good hold on Vocab and Grammar may have answered the 16 good questions to ensure success in verbal.

COMPARISON WITH THE PAST CATS

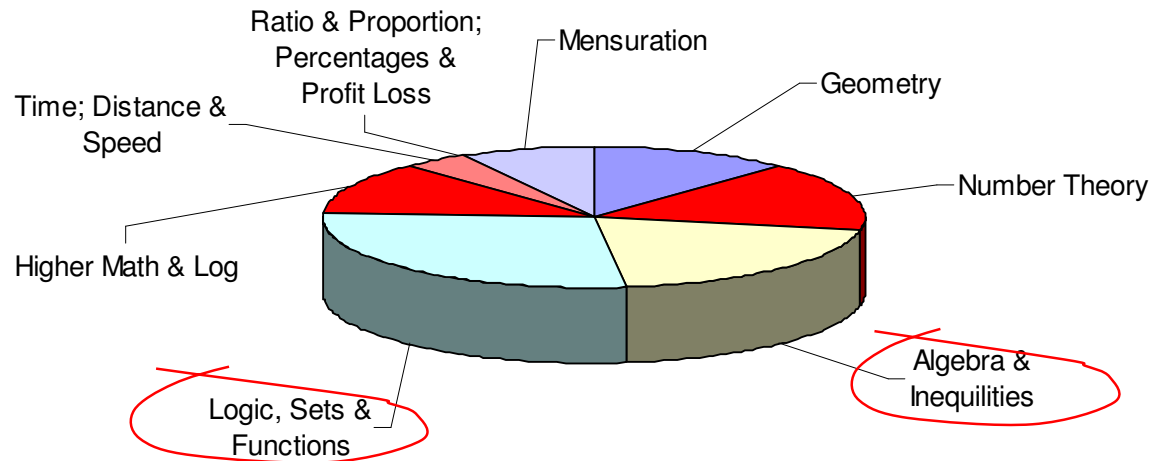
**CAT - Verbal
(Comparative Analysis of last 5 CATs)**



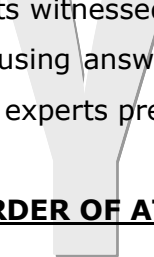
Quant Section



CAT 2008 Quant - Topic wise share



Quant was easier as compared to CAT 2007 as students witnessed the familiar question types and formats in CAT 2008. TCY experts assert that many questions were answerable using answer options; substitution method and other un-conventional techniques leading to cut offs for a sure IIM's call. TCY experts predict a cut-off of around 25 for at least one IIM call.



RECOMMENDED ORDER OF ATTEMPT IN CAT QUANT

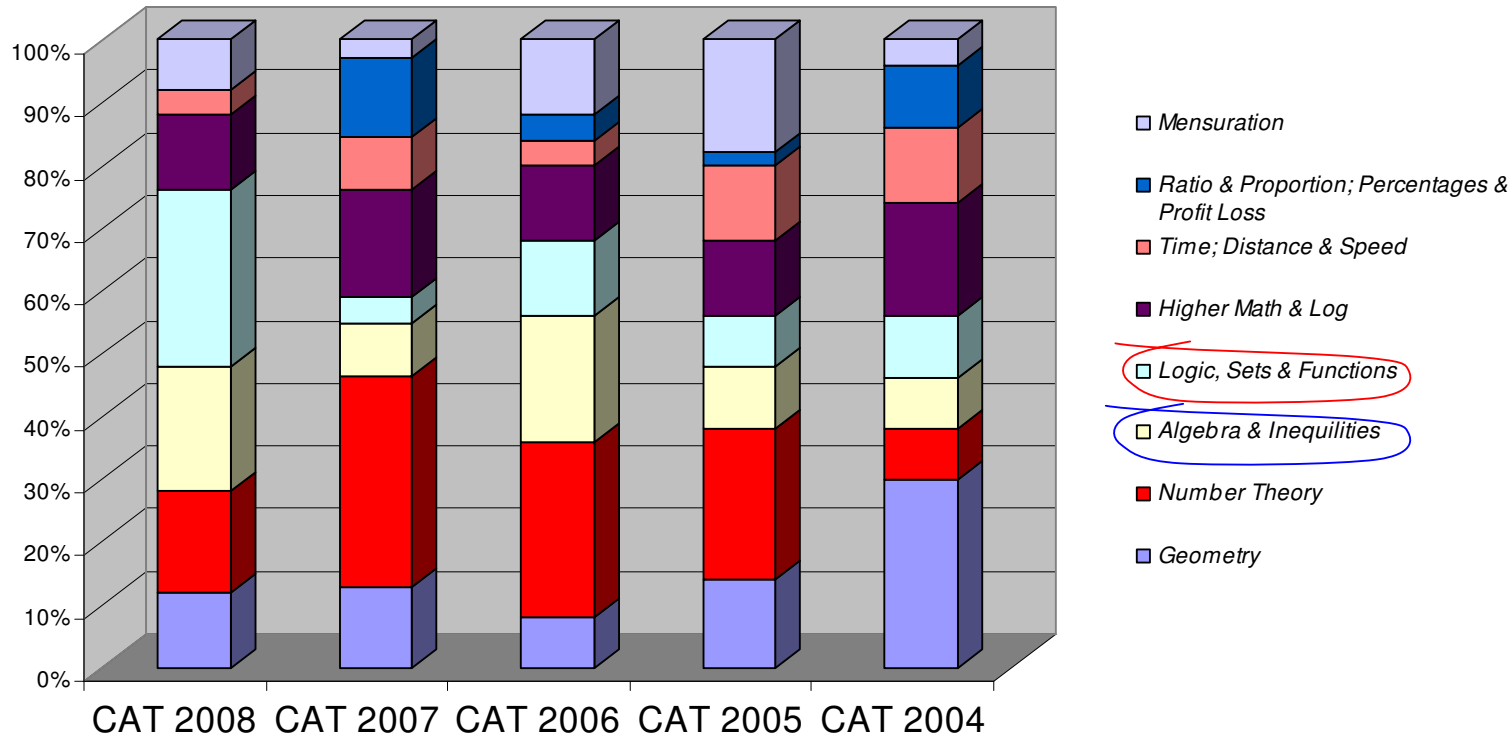
The highly recommended questions to be answered initially (in the round 1) are:

- Two questions from 'Number Theory' were 'run of the mill' kinds. TCY students experience such question types majorly in all of their National CATs.
- Two more questions from Algebra were on the last years' pattern requiring merely the values to be calculated using un-conventional techniques
- Two questions from Permutations & Combinations were on the pattern of CAT 2005, but were deliberately made a little tougher.
- Additional 2 – 3 questions could have been answered with the help of options especially those from Number Theory & Algebra (over and above the ones mentioned earlier).
- 4 – 5 more logical questions and the ones from algebra were answerable using substitution method.

CAT 2008 also witnessed 2 questions from DS which were earlier there in the DI section of CAT 2007.

COMPARISON WITH THE PAST CATS

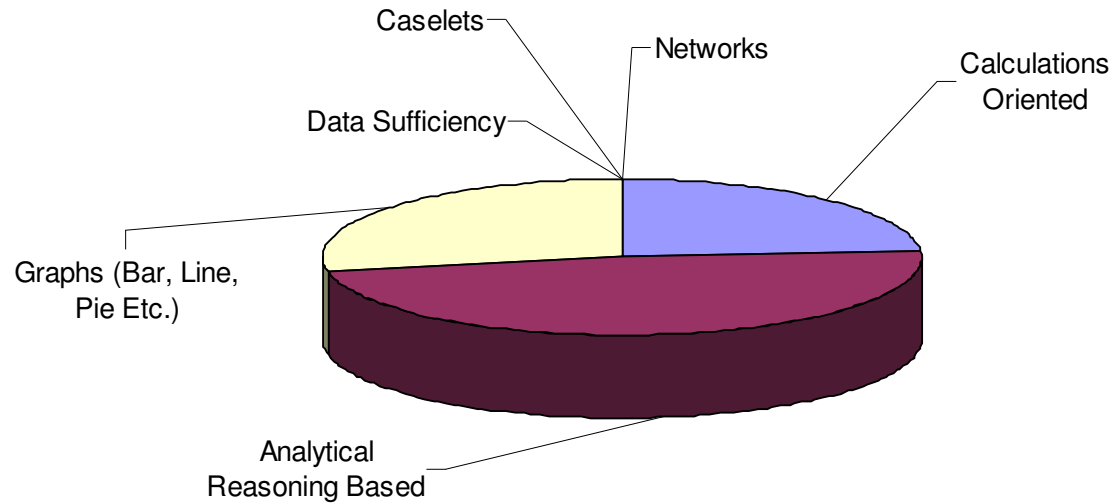
CAT - Quant
(Comparative analysis of last 4 CATs)



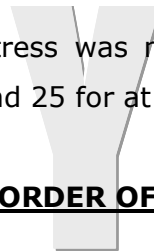
DI Section



CAT 2008 Data Analysis - Topic wise breakup



This was a difficult section for the test takers as stress was more on analytical reasoning questions than on the ones involving big calculations. We predict a cut-off of around 25 for at least one IIM call.



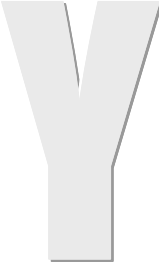
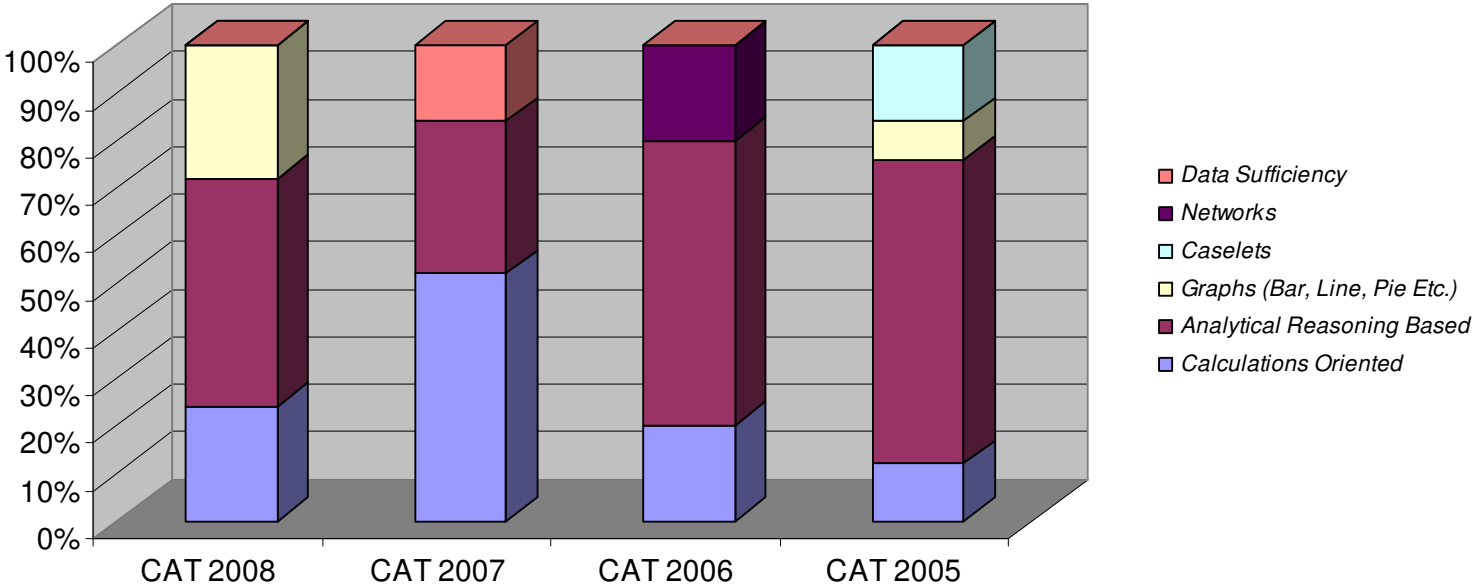
RECOMMENDED ORDER OF ATTEMPT IN CAT DI

Following was the order recommended for the DI section:

- The question based on 'houses' was the easiest and should have been attempted first.
- There were 4 questions based on average much like the ones that appeared in CAT 2005
- Additional 5 questions on 'Stocks' similar to the ones in CAT 2006
- 3 more questions based on 'Tele-communication' theme were resembled the ones in CAT 2004

COMPARISON WITH THE PAST CATS

CAT - Data Analysis
(Comparative analysis of last 4 CATs)



Top Careers & You®

A detailed comparison of this year's CAT with the **last 8 CATs** is as follows:

Exam	Area	Questions	Marks per question	Total Duration	Avg time per question	Difficulty level	Appx Cut-off for one call	Overall cutoff for IIMs	Negative Marking
CAT 2008	Q	25	100	40	2.5 min	Moderate	25 to 35	105 to 130	¼ th
	V	40	160	70	2.3 min	Easy but lengthy	40 to 45		
	D	25	100	40	2.5 min	Difficult	25 to 32		
CAT 2007	Q	25	4	150 min	120 sec	Difficult	32 to 36	110 to 129	¼ th
	V	25	4			Easy But Lengthy	38 to 45		
	D	25	4			Moderate but trickier	40 to 48		
CAT - 2006	Q	25	4	150 min	120 sec	Easy	29 to 34	116 to 124	¼ th
	V	25	4			Difficult	35 to 40		
	D	25	4			Difficult	36 to 42		
CAT - 2005	Q	30	20 questions - 2 marks, 10 questions - 1 mark	120 min	75 sec	Average	16 to 18	60 to 64	1/3 rd
	V	30	20 questions - 2 marks, 10 questions - 1 mark			Average	18 to 20		
	D	30	20 questions - 2 marks, 10 questions - 1 mark			Difficult	11 to 13		

www.TCYonline.com

No. 1 Testing Platform

Top Careers & You®

T

C

Y

www.TCYonline.com

No. 1 Testing Platform

Top Careers & You®

Exam	Area	Questions	Marks per question	Total Duration	Avg time per question	Difficulty level	Appx Cut-off Score	Overall cutoff for IIMs	Negative Marking
CAT - 2004	Q	35	20 questions - 1 Mark, 15 Questions - 2 marks	120 min	58.5 sec	Difficult	8 to 10	60 to 65	Not specified
	V	50	10 questions - 0.5 Mark, 35 questions - 1 marks, 5 questions - 2 marks			Easy	18 to 21		
	D	38	26 questions - 1 mark, 12 questions - 2 marks			Difficult	9 to 11		
CAT - 2003	Q	50	1	120 min	48 sec	Difficult	10 to 12	64 to 70	Not specified
	V	50	1			Easy	18 to 22		
	D	50	1			Average	15 to 17		
CAT - 2002	Q	50	1	120 min	48 sec	Difficult	11 to 13	68 to 76	Not specified
	V	50	1			Easy	18 to 22		
	D	50	1			Difficult	14 to 16		
CAT - 2001	Q	50	1	120 min	48 sec	Average	14 to 17	80 to 85	Not specified
	V	50	1			Easy	19 to 21		
	D	50	1			Easy	20 to 22		
CAT - 2000	Q	55	1	120 min	44 sec	Difficult	9 to 12	65 to 75	Not specified
	V	55	1			Difficult	16 to 19		
	D	55	1			Average	12 to 14		

www.TCYonline.com

No. 1 Testing Platform

Top Careers & You®

T

C

Y

www.TCYonline.com

No. 1 Testing Platform